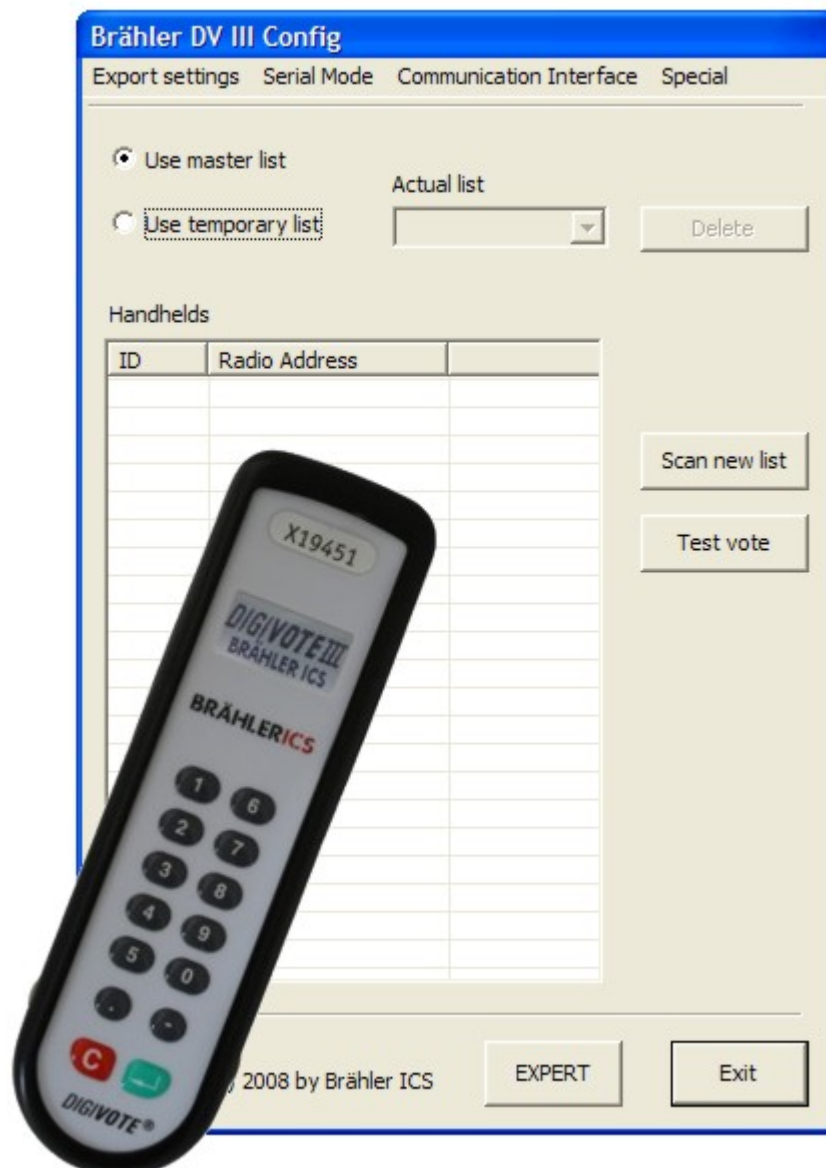


- **DIGIVOTE® III**
- **Software Configuration tool**



## Operating instructions

Software Ver. 2.0.8 / Rev 1.1

Printed in Germany

Should you have any questions about this manual please contact:

Brähler ICS Konferenztechnik  
International Congress Service AG  
Auf der Alten Burg 6  
53639 Königswinter, Germany  
Tel.: +49 (0)2244 930-0  
E-Mail: [sales@braehler.com](mailto:sales@braehler.com)

You will find further information about our products on the internet at:

[www.braehler.com](http://www.braehler.com)

© 2008  
BRÄHLER ICS AG, Königswinter

DIGIMIC® is a registered Trade Mark of Brähler ICS Konferenztechnik International Congress Service AG, Germany.

All other mentioned trademarks are trademarks or registered trademarks belonging to a particular proprietary and will be accepted as protected.

All rights reserved, especially (also partly) the translation, reprint, reproduction through copying or other similar methods.

BRÄHLER ICS reserves the right to make changes without notice.

Operating instructions DIGIVOTE, Code BGSWE DVIII-Configtool.doc

Mar 08

## Inhalt

<b>License Agreement</b> .....	<b>4</b>
<b>About this manual</b> .....	<b>7</b>
Symbols .....	7
<b>Configuration tool for DIGIVOTE® systems</b> .....	<b>9</b>
General.....	9
Installation .....	9
<b>Starting DV3Config</b> .....	<b>9</b>
BASIC Mode .....	10
Handheld Scan .....	14
EXPERT mode .....	16
Test Vote .....	17
Scan new list.....	19
ID Programming (Master list).....	20
Set channels .....	22
Special – Reset Handhelds.....	23
<b>Contact information</b> .....	<b>25</b>

## License Agreement

### 0. LICENSE AGREEMENT

Below are the terms and conditions of the Agreement applying to use of BRÄHLER software by you, the end user (hereinafter also called "licensee").

By opening the sealed packet(s) containing the software disks you are agreeing to be bound by the terms of this agreement.

Therefore, please read through the following terms and conditions fully and carefully. If you do not agree to the terms of this agreement, you may not open the disk package(s).

In this case promptly return the unopened disk package(s) and all other items of the purchased product (including all written materials, accompanying hardware and the packaging) to the place you obtained them for a full refund.

### TERMS OF AGREEMENT

#### 0.1 Subject-Matter of this agreement

The subject-matter of this Agreement is the Computer Software Program recorded on this data carrier (disk), the description of the program and the operating instructions, including all other related written materials, hereinafter called "Software". BRÄHLER ICS draws attention to the fact that, given the rate of technological progress, it is not possible to make computer software fully compatible with absolutely all applications and software and hardware combinations. Thus the subject-matter of this agreement covers only such Software as is substantially operative in keeping with the description of the program and the operating instructions.

#### 0.2 Extent of Use

For the duration of this agreement BRÄHLER ICS grants you the simple non-exclusive right (hereinafter also called "license") to use the accompanying copy of BRÄHLER ICS software on a single computer (i.e. with a single CPU) at only one location. If this single computer represents a multi-user system, this right of use applies to all users of this single system. As the licensee you may physically transfer the Software (i.e. recorded onto a storage medium) from one computer to another, provided that you only use the Software on a single computer at any one time. Any further usage is prohibited.

#### 0.3 Particular Restrictions

The licensee is forbidden to

- a) hand over the Software or the accompanying written materials to third parties or to otherwise make this available to such third parties without prior written consent from BRÄHLER ICS; b) transfer the Software from one computer to another via a data network or data transmission channel;
- c) modify, translate, reverse engineer, decompile or disassemble the Software without prior written consent from BRÄHLER ICS;
- d) create derivative programs from the Software or copy the accompanying written materials;
- e) to translate such written materials or modify them or produce derivative documentation from it.

#### 0.4 Ownership of Rights

By purchasing this software product you are only given ownership of the physical storage medium onto which the Software has been recorded. This is not accompanied by acquisition of the rights to the Software itself. In particular, BRÄHLER ICS reserves the right to publish, copy, process and exploit the Software.

### 0.5 Copying

The Software and the accompanying written materials are protected by copyright. In as far as the Software is not copy-protected; you are permitted to make a single copy solely for backup or archival purposes. You are obliged to attach or include a BRÄHLER ICS copyright notice to or with the backup copy. The copyright notice comprised in the Software as well as the included registration code may not be removed. You are expressly forbidden to otherwise copy the Software and the accompanying written materials in whole or in part, both in the original form of the Software or by way of derivation, or by merging it with other software or somehow otherwise copying it.

### 0.6 Duration of this Agreement

This Agreement is of unlimited duration. The licensee's right to use this Software is automatically extinguished without notice if he infringes any of the terms of this Agreement. On expiry of his right of use, he is obliged to destroy all original disks as well as all copies of the Software including any modified copies, not forgetting the accompanying written materials.

### 0.7 Damages for Violation of this Agreement

BRÄHLER ICS draws attention to the fact that you are liable for all damage which accrues to BRÄHLER ICS by virtue of copyright violations arising from a violation of one of the terms of this Agreement by you.

### 0.8 Modifications and Updates

BRÄHLER ICS is entitled to make updates of the Software at its own discretion. BRÄHLER ICS is not obliged to make future updates of the Software program available to those licensees who have not returned the signed registration card to BRÄHLER ICS or who have not paid the corresponding update charges.

### 0.9 Warranty and Liability of BRÄHLER ICS

- a) BRÄHLER ICS warrants vis-à-vis the original licensee that, at the time of the delivery, the data carrier (disk) onto which the Software has been recorded and the accompanying hardware will be free from defects in materials and workmanship under normal service and maintenance.
- b) Should the data carrier (disk) or the accompanying hardware be faulty, the purchaser may demand replacement of the goods for a warranty period of 6 months from the day of receipt. To qualify for this he must return the disk(s), any accompanying hardware including the backup copy and written materials and a copy of the invoice/receipt to BRÄHLER ICS or to the place where the product was obtained.
- c) For the above-mentioned reasons specified under Point 0.1 of this Agreement, BRÄHLER ICS shall assume no liability as to the faultlessness of the Software. In particular BRÄHLER ICS disclaims any warranty for the Software's suitability as regards meeting the needs and purposes of the purchaser or as regards the ability of the Software to work in unison with other software programs chosen by the purchaser. The responsibility for correct choice and for any consequences arising from use of the Software or from the aims pursued and results achieved by its implementation shall be borne by the purchaser. The same applies to the written materials accompanying the Software. If the Software is not substantially usable in accordance with Point 0.1 of this Agreement, the purchase has the right to rescind the Agreement. BRÄHLER ICS has the same right if the manufacture of substantially usable software within the meaning of Point 0.1 is not possible within reasonable bounds.
- d) BRÄHLER ICS shall not be held liable for damages, unless these have been brought about with intent or by gross negligence on the part of BRÄHLER ICS. Liability for gross negligence is additionally excluded for business people. Liability for any program characteristics promised by BRÄHLER ICS remains unaffected. Liability for consequential damages arising from defects, which are not covered by the warranty, is excluded.

Should you have any questions concerning this BRÄHLER ICS Software License Agreement, or if you desire to contact BRÄHLER ICS for any reason, please write to:

**Brähler ICS Konferenztechnik  
International Congress Service AG**

P.O. Box 3264

53627 Königswinter, Germany

## About this manual

### Symbols

The meanings of the symbols and fonts used in this manual are as follows:



Indicates an important note, if not minded, the functionality of the unit, the security of your data, or your health are put at risk.



Supplementary information, remarks, and tips follow this symbol.



Text, which follows this symbol, describes activities that must be performed in the order shown.

**Words in bolded letters** require your special attention.





## Configuration tool for DIGIVOTE® systems

### General

This tool comes as separate to the actual DIGIVOTE program (Digivote interactive professional). It allows you to easily create an INI file (HHList.ini) to enable the available voting units available (also called "handhelds") to be correctly registered before using the DIGIVOTE III software. This procedure should only be carried out once. Repeating this step is only necessary if new or other voting units are added.

The transmitting channel can also easily be changed using this tool. This would be necessary for example, if two votes independent of each other have to be made right next to each other.

### Installation

The installation is carried out using a setup wizard and follows the usual procedure in program installations. Please ensure that administrator rights under Windows® XP are required for the installation.

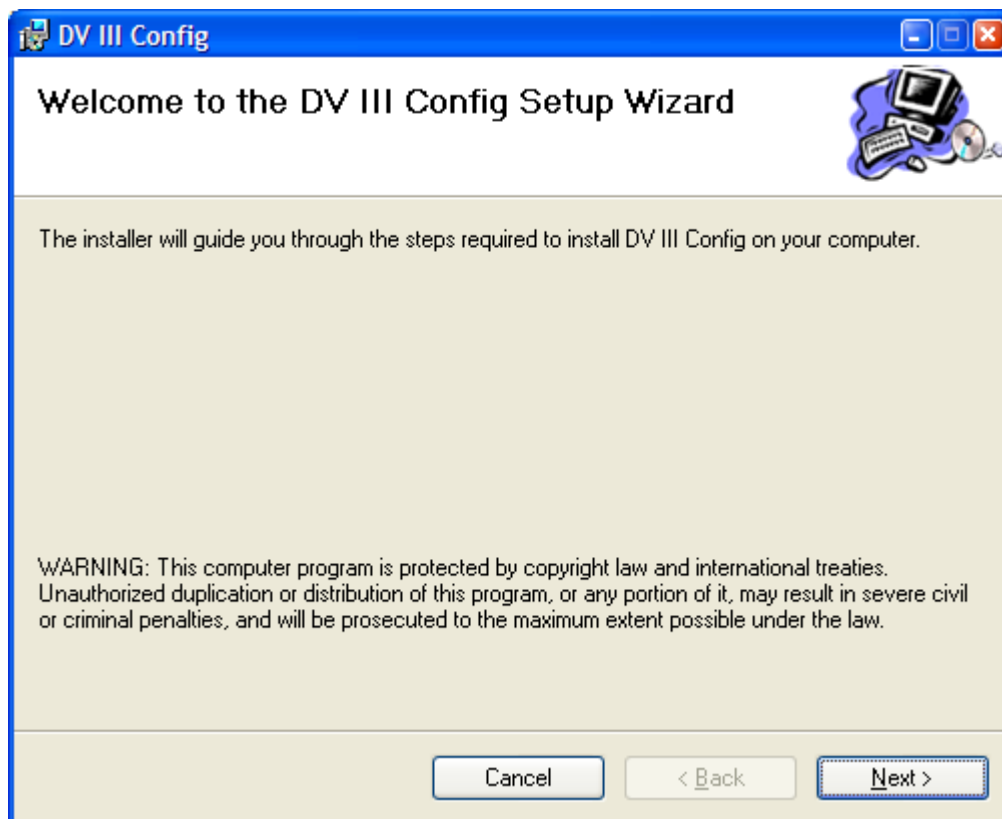


Fig. 1

### Starting DV3Config

After successful installation look for the configuration tool "DVIII Config" in a new program folder "BRAEHLER ICS". Any available older version is automatically uninstalled during installation.

### BASIC Mode

“Start – all programs – BRÄHLER ICS – DV III Config“ leads to the following program window. The tool opens in “BASIC“ Mode:

Control or adjust the communication port you use for the TR30 transponders. If there is a COM (serial) connection control also “Serial Mode“ if necessary.

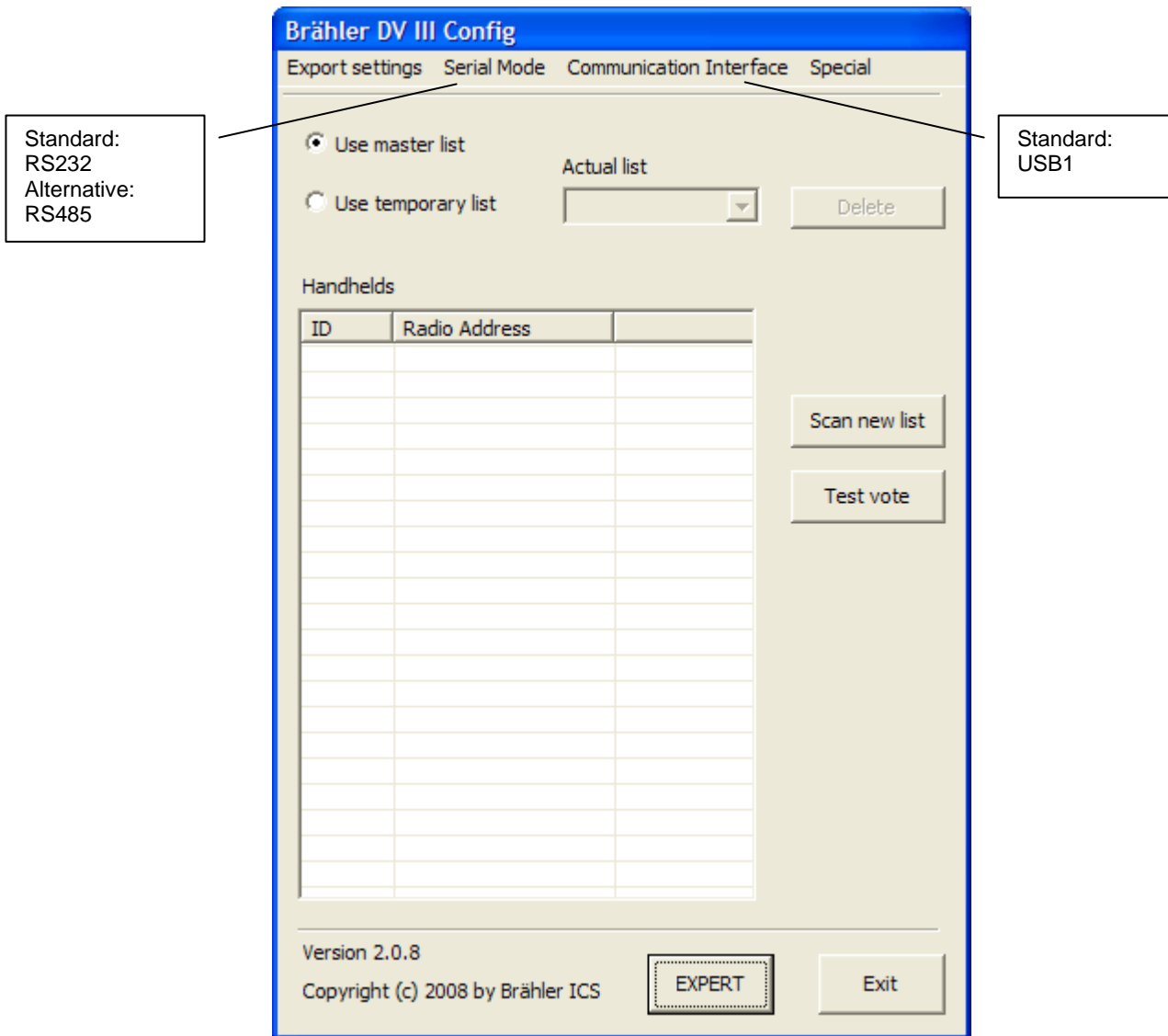
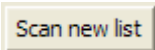


Fig. 2

Next follow these three steps before the device can be used for the first time:



1. This is how the voting units to be used are registered. For the next step refer to the next section “Scan new list“ Handheld Scan (page 14).

Test Vote

2. "Test Vote" is not an absolute requirement but is an easy to carry out handheld test after scanning the available units. We therefore recommend this test to ensure the voting process runs smoothly.

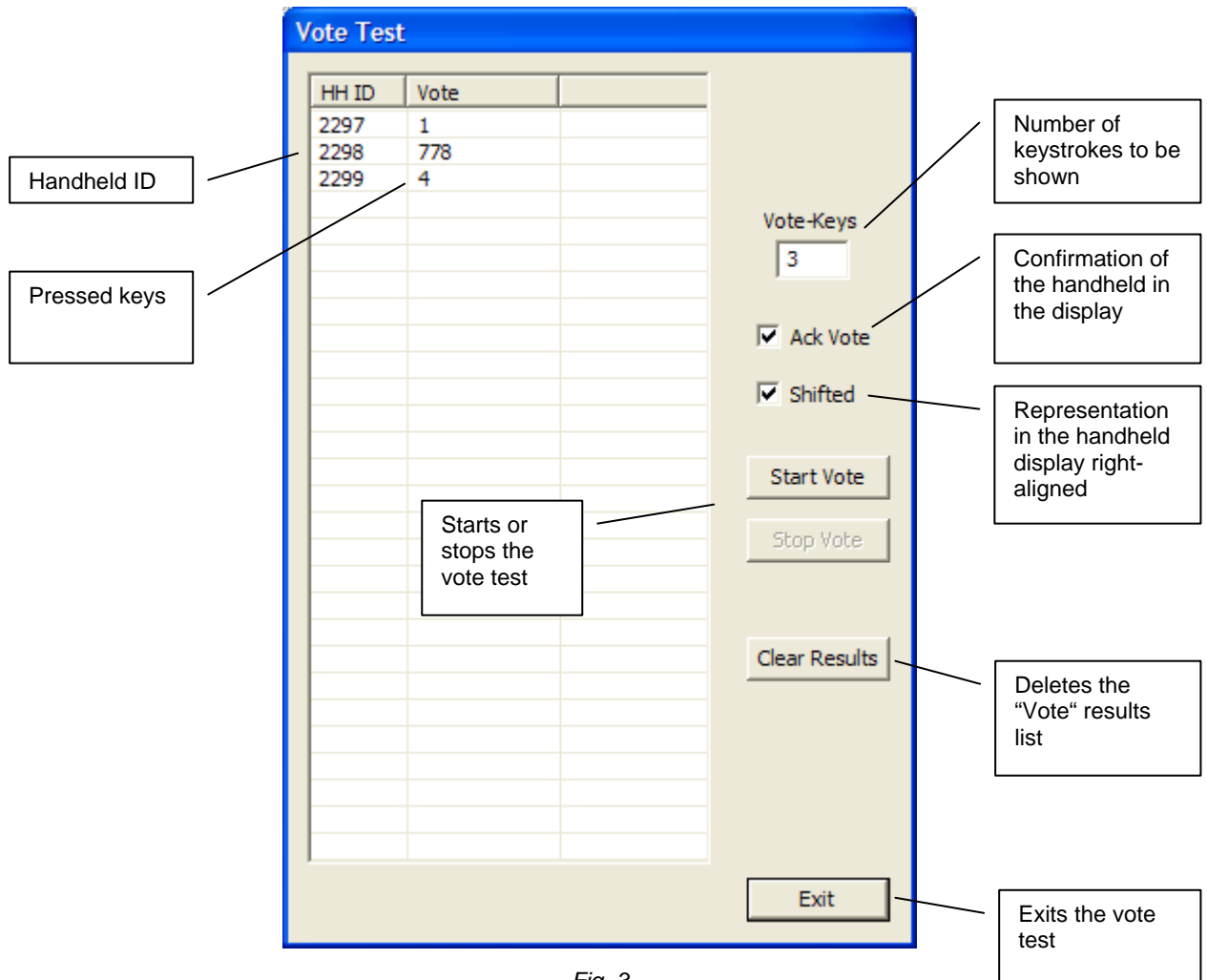
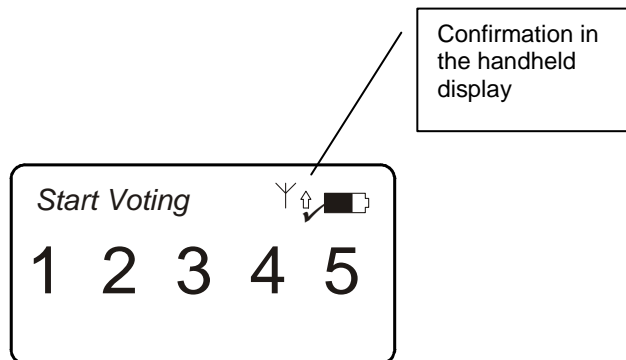


Fig. 3



3. "Export settings – DIGIVOTE interactive professional"

This function creates and saves the necessary ini file "hhlist.ini" for the DVIII software.

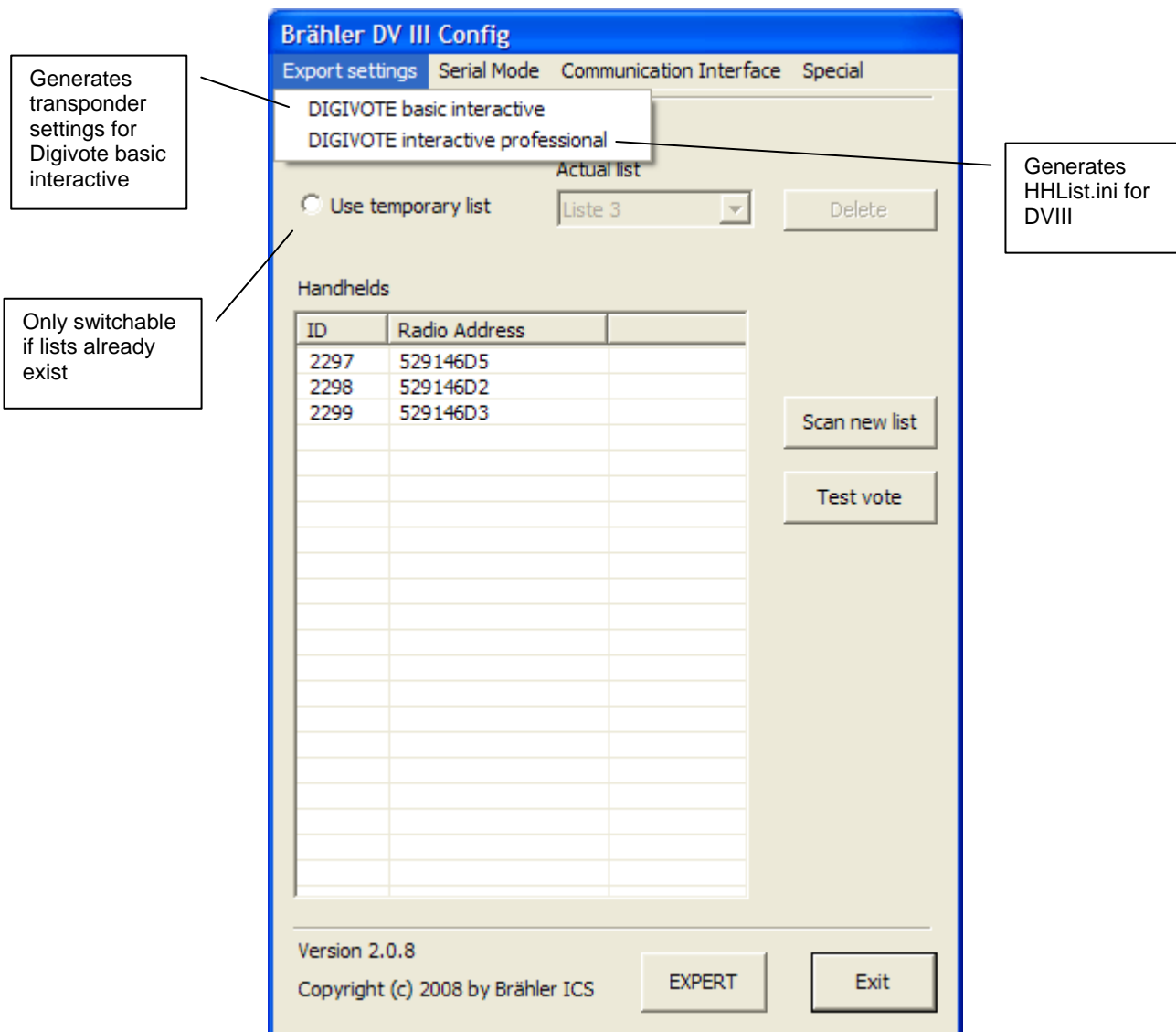


Fig. 4

Just click on "Export settings – DIGIVOTE interactive professional" to call up the dialogue "Save as". If it is not preset, save the ini file in the DVIII installation directory. Normally this is „DIGIVOTE III“. Do not change the name entered, **hhlist.ini**.

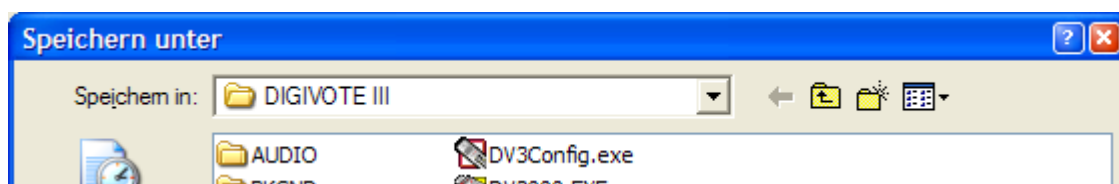


Fig. 5

This creates the basic settings for voting using DVIII.

Click on “Export settings – DIGIVOTE basic interactive” to call up the following dialogue.

Here you can make transponder settings outside the “basic interactive” software. In the BASIC mode of Config Tool settings are limited to the communication port or the interface between the transponder and the PC as well as the voting settings described in fig. 6.

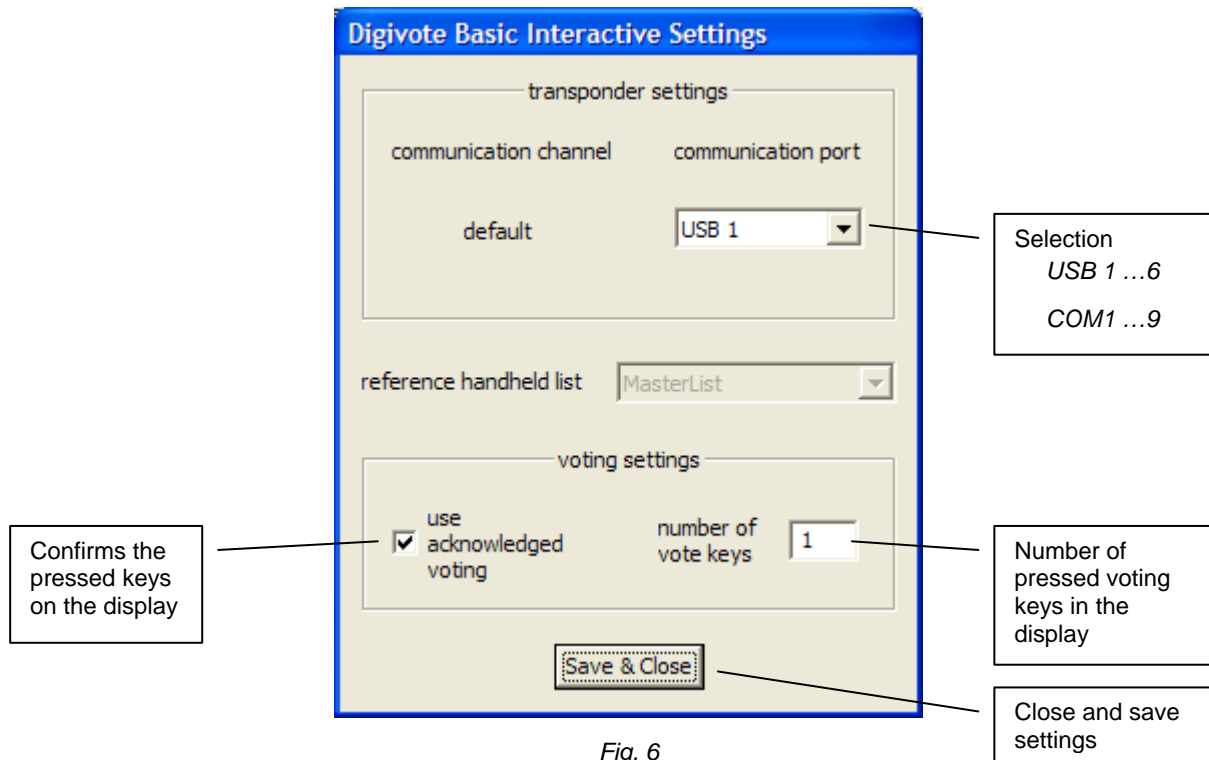


Fig. 6

**Handheld Scan**



The following section describes the scan of a new list in BASIC mode. Please make sure that the voting units are switched on in "Live" mode or are in standby mode (dark display).

The interface shows the following settings and results:

- Channel to scan:**  Live  Case
- Scan Settings:**  Scan over all  Scan ID ranges
- aprox. max expected handhelds:** 50
- Buttons:** Start Scan, Update Scan, 3 handhelds scanned!
- Table:**

ID	State	ML ID	Radio Addr
2297	All OK	2297	529146D5
2298	All OK	2298	529146D2
2299	All OK	2299	529146D3
- Bottom Buttons:** Save as new list, Merge into Masterlist, Exit

Callouts provide additional context:

- Live:** outside the charging case
- Case:** in the charging case
- Starts the scanning process:** Start Scan button
- Results of the scan: 3 units found:** Table content
- Number of voting units expected:** Input field with value 50
- The existing list is retained, i.e. new handhelds will be added to the list:** Scan Settings area

Fig. 7

**Channel to Scan:** Selection of the scanning channel

*Live* - With voting units outside a load/transport case. Caution: this affects all handhelds not in the load case and relates to the entire transponder scope!

*Case* - for scanning voting units in the case (TK50-DVIII switched on)

**Scan over all:**

The entire ID area is scanned

**Approx. max expected handhelds:**

Enter approximate number of handhelds expected

**Scan ID ranges:**

This selection sets the area to be scanned by the handhelds' ID

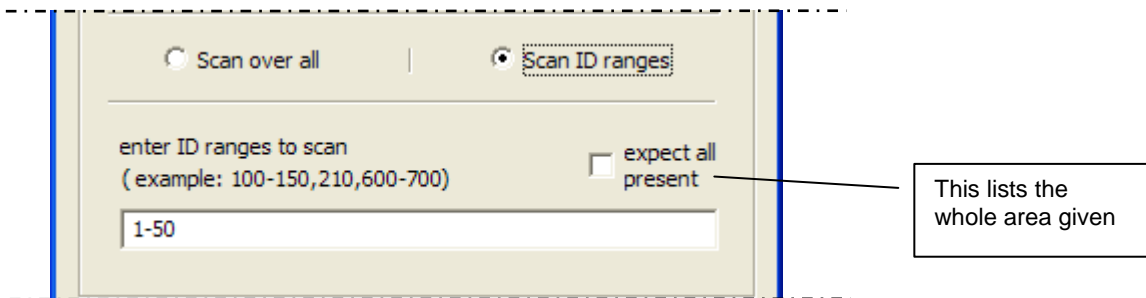


Fig. 8

**Other buttons for "Handheld Scan" window:**

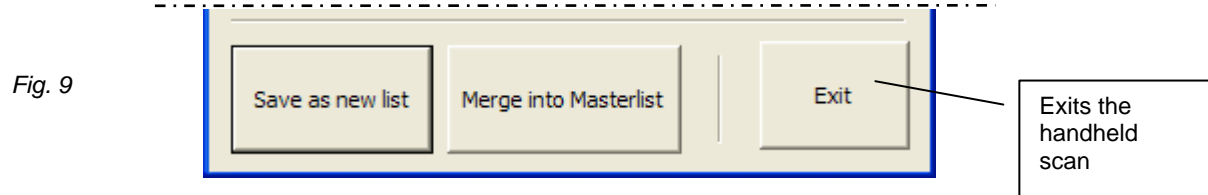
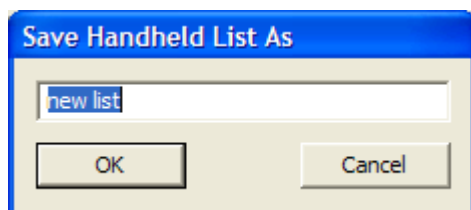


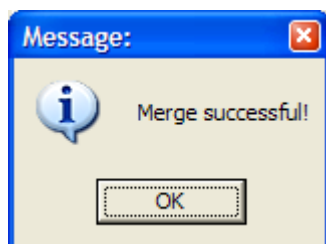
Fig. 9

**Save as new list:**



Import or describe (e.g. extra case number 23) the recommended list name (here: new list) and confirm with "OK".

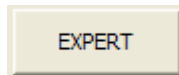
**Merge into Master list:**



The scan list produced is added to the master list. This is confirmed with a message (OK) → Merge successful

**EXPERT mode**

”EXPERT“ mode allows you continued setting possibilities in addition to BASIC mode. Simply click on the button and the window for Expert mode appears.



This section deals especially with the expanded features of the mode. So note ”BASIC Mode“ section as well.

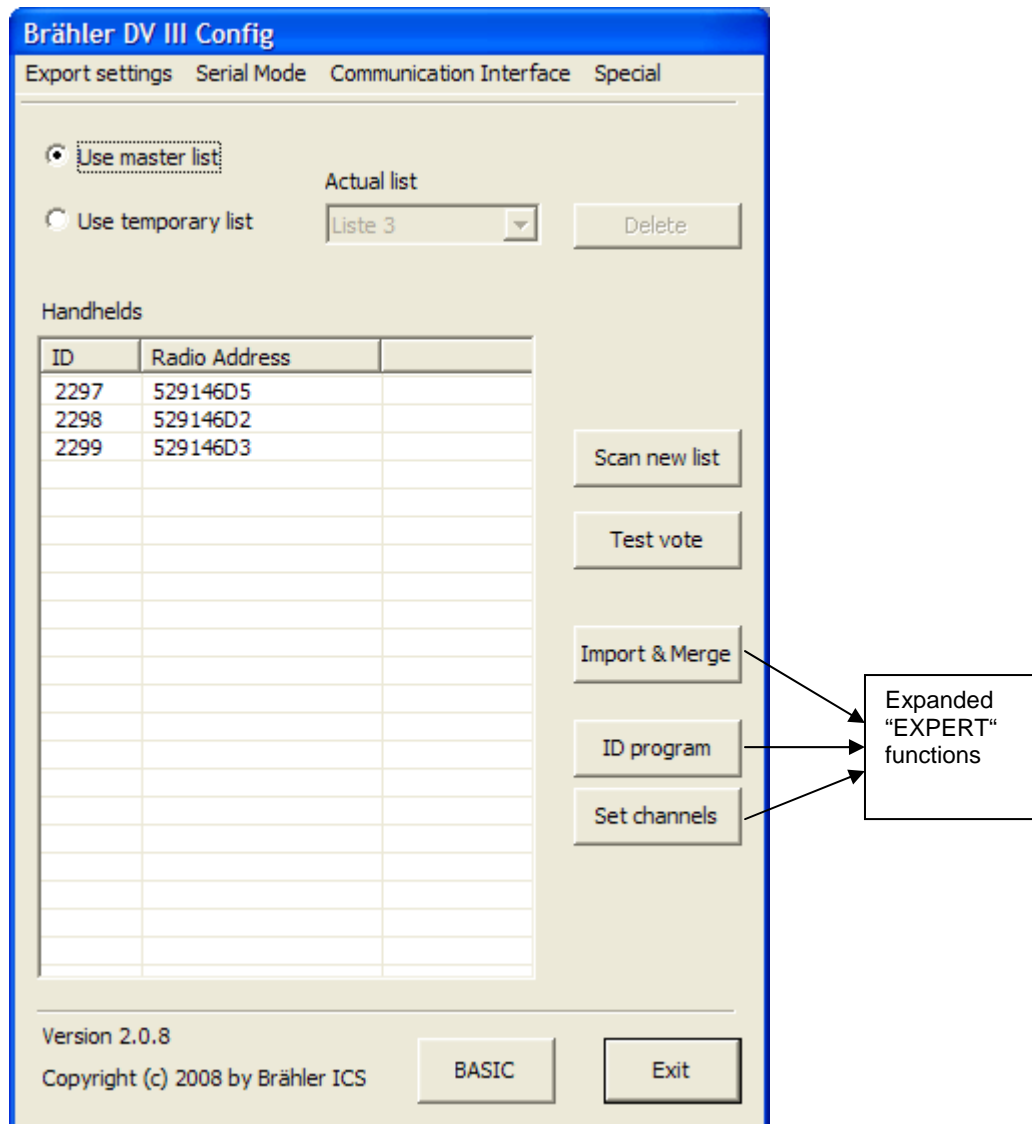


Fig. 10

**Use master list**

Indicates that the information should only be processed using a master list. The list has a special status and cannot be deleted.

**Use temporary list**

this means that you can work with several lists, can only be selected if lists already exist.



**Actual List:** (HHLLists)

Indicates the already created and locally stored HHLLists for selection by a Combo-Box

**Delete:**

Deletes an available marked HHLList (Handheld list) from the selection list

**Scan new list:**

Starts the scan process to create a new list (HHLList) from handhelds. See next section

**Test Vote**

In "EXPERT mode" the voting channel can also be selected. All other functions are described in the "BASIC mode" section.

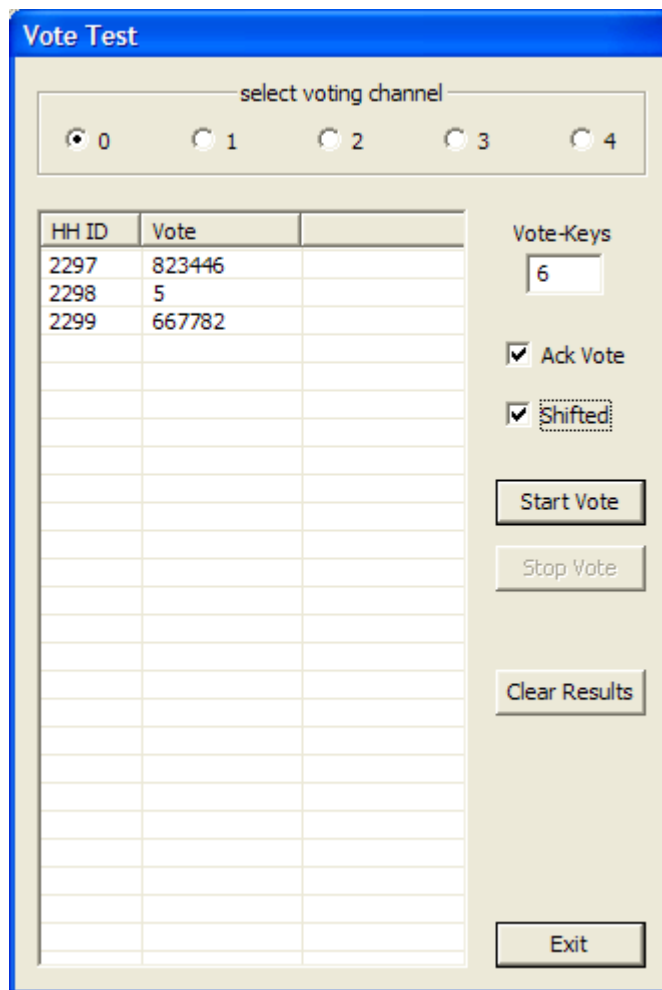


Fig. 11

**Import & Merge:**

This menu offers a variety of ways to store new lists with other already stored lists or combine them with other lists.

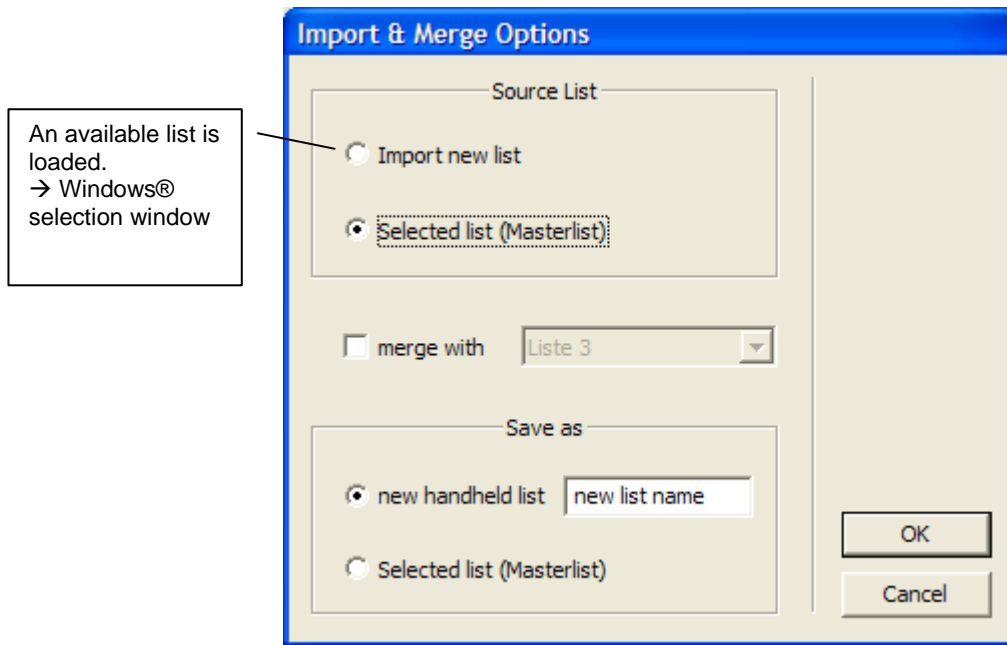


Fig. 12

**Merge with:**

Available HHLLists can be combined. E.g.: various systems can be separately listed and merged if necessary.

**Save as:**

Either a new list (new handheld list) is created and stored or the current list is stored as a master list (selected list).

**Scan new list**



The following section describes the scan of a new list in EXPERT mode. The differences with BASIC mode are the expanded scan settings as described in the following. Please note that in "Live" (mode channel to scan 0 to 4) the handheld is switched on or is in standby mode (the display is dark).

The other procedure for the handheld scan corresponds to the BASIC mode from the previous chapter.

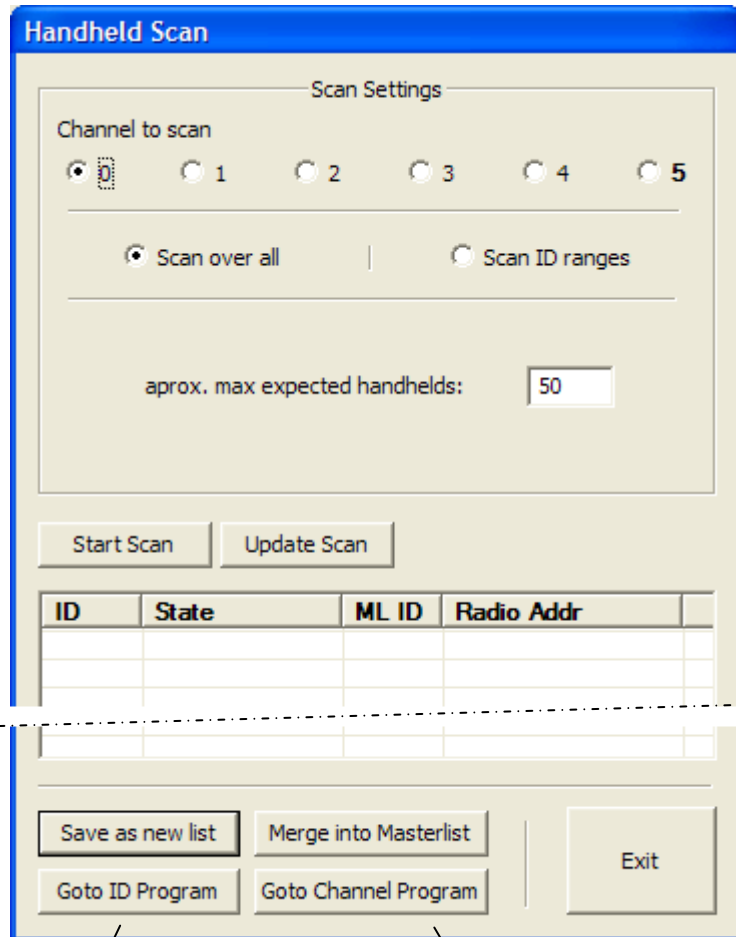
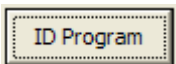


Fig. 13

Direct transfer to ID programming

Direct transfer to the handheld channel programming (Set channel)

### ID Programming (Master list)



The communication channel to the handhelds is determined by a click field, 0 to 5, whereby channel 5 indicates operation in the TK50-DVIII load module.

**Note:**  
The handheld with ID 2298 is not switched on (or not in standby Mode)

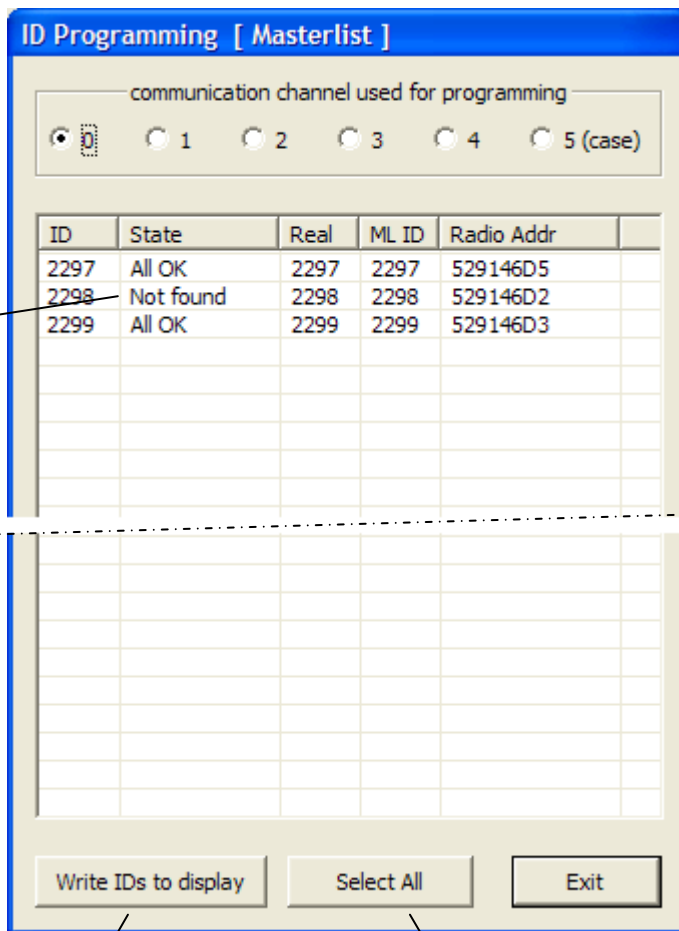


Fig. 14

The IDs of the found units are sent to the handhelds' display (see below)

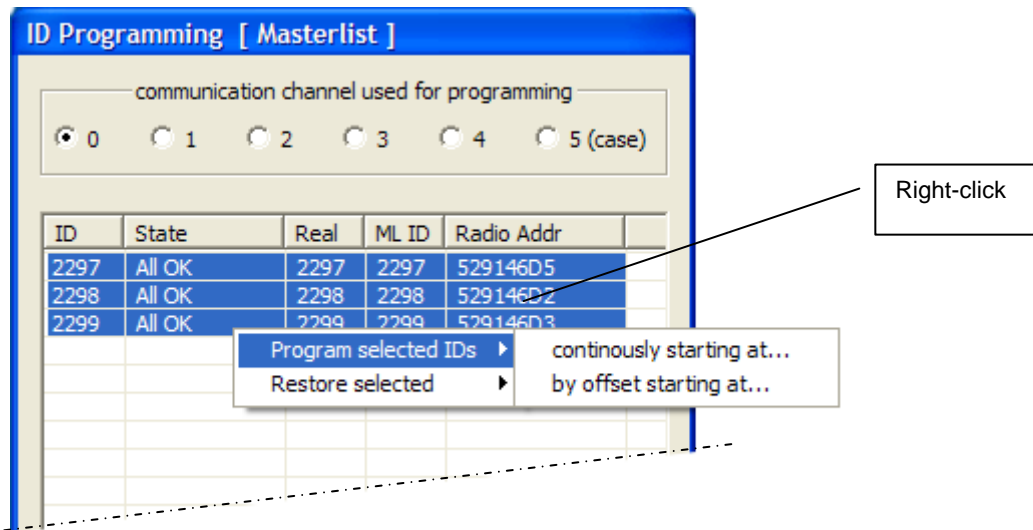
All entries in the list are marked

Format: ID / Real → e.g. C 2299 / O 2299 (current ID / Original ID)

**Note:** the marks inside the list follow the marking opportunities according to Windows®.

**Options for ID programming:**

You can receive other options by right-clicking on one or all (Select All) entries in the list. The diagrams below show the other features:



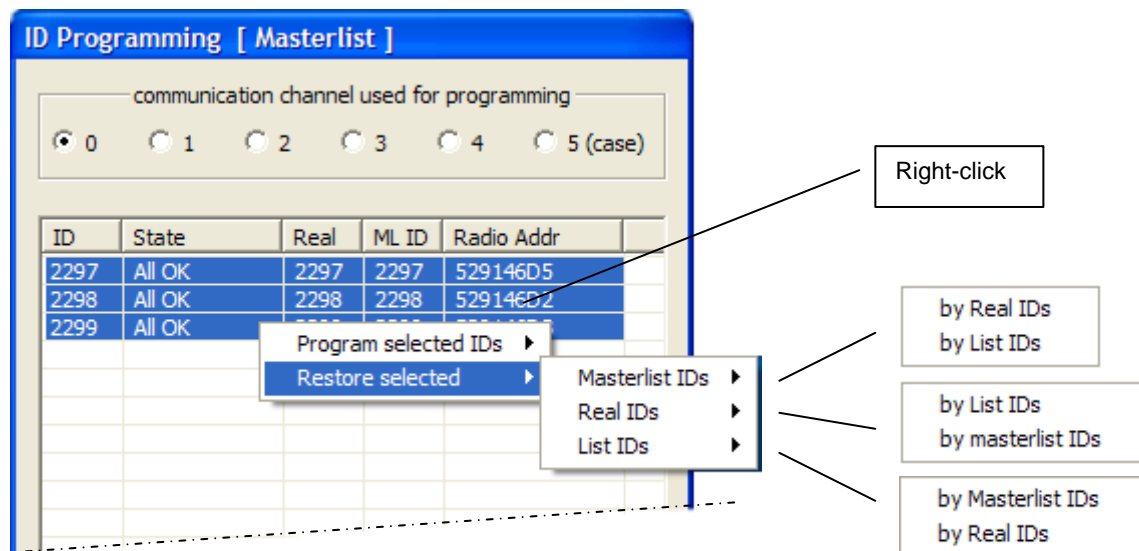
**Program selected IDs**

Continuously starting at ...

This means enter a Start ID for continuous change to IDs

By offset starting at ...

Enter a Start ID for Offset, i.e. all handhelds are changed by a particular value (the offset) relating to the ID.



**Restore selected** (recovery of IDs selected)

Master ID

Recovery of the master list (according to Real IDs or IDs from the list)

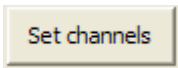
Real IDs

Recovery of the Real IDs (according to the IDs from the list or master list)

List IDs

Recovery of the List IDs (according to the master list or IDs from the list)

**Set channels**



This section of the tools allocates the handheld to a new channel. This may be necessary if another vote is planned at the same time in an adjoining room for example.

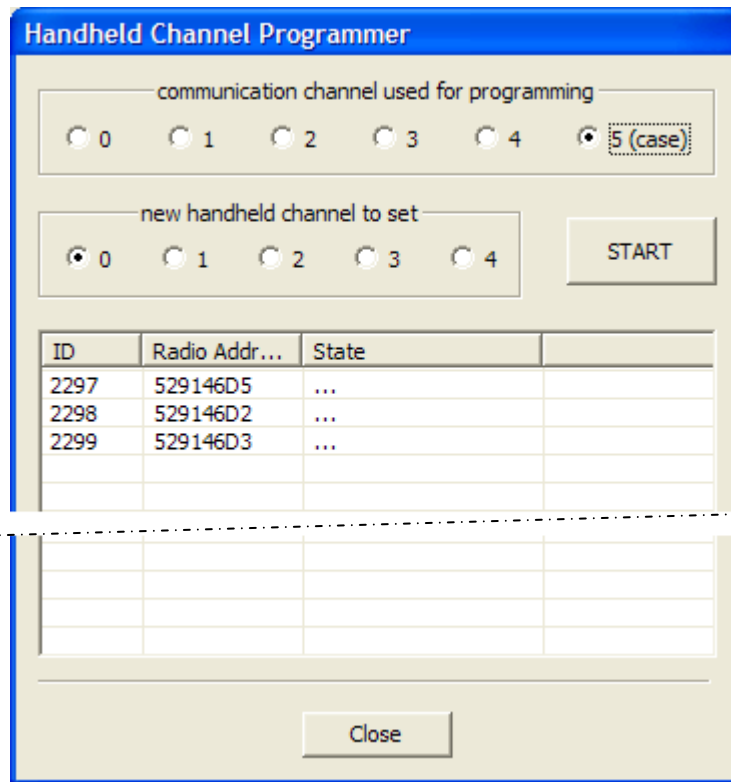


Fig. 15

**Note:** The above example is set as communication channel no. 5 – this is the load module, i.e. the relevant handhelds must be in load module TK50-DVIII. After switching on the load module the handhelds remain in configuration status for 2 minutes, i.e. you can now change to a new channel (new handheld channel to set).

Other communication channels (0 to 4) relate to **all** handhelds that can be reached in the range of the transponders. Please take note when carrying this out.

"Start" begins the implementation of this channel.

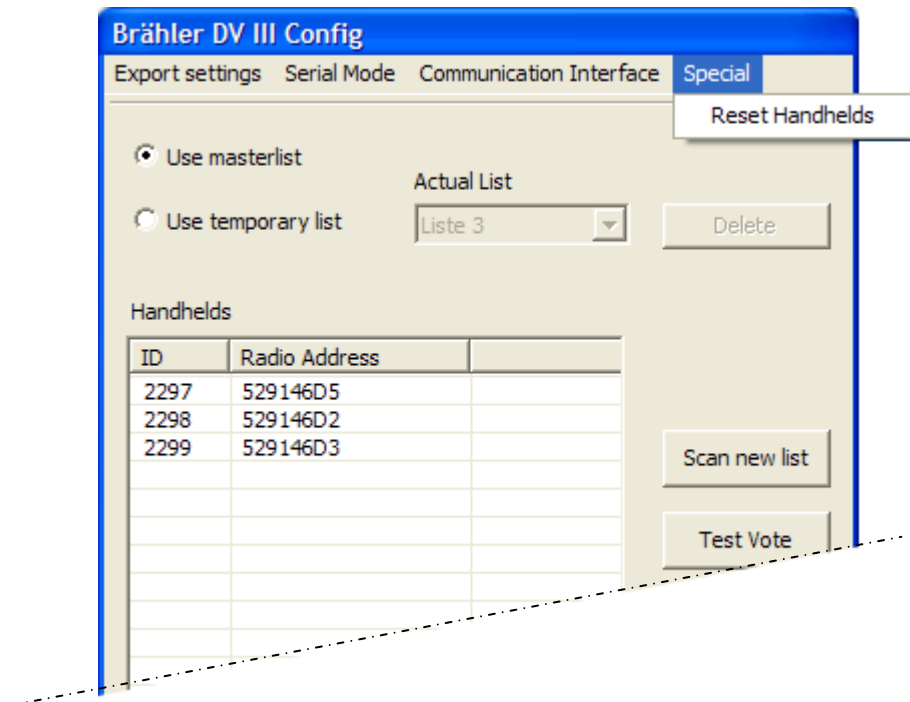
At the end of the procedure a message is logged with the number of handhelds whose channels were changed. If the number of these units does not match the actual number, the process can be repeated with the "Start" button.

The procedure is completed with "Close".

**NB!**



After the handheld channels have been reset the transponder channel must then also be reset → default transponder channel

**Special – Reset Handhelds**

This menu item resets the handhelds in the list.

---

This completes the prepared configuration for DIGIVOTE®. DIGIVOTE® interactive professional can now be started.

---





## Contact information

### **BRÄHLER ICS Konferenztechnik International Congress Service AG**

P.O. Box 3264  
53627 Königswinter

Tel.: +49 (0)2244 930-0  
[www.braehler.com](http://www.braehler.com)

#### **Sales**

Tel.: +49 (0)2244 930-0  
Fax: +49 (0)2244 930-450  
E-Mail: [sales@braehler.com](mailto:sales@braehler.com)

#### **Rental Service**

Tel.: +49 (0)2244 930-200  
Fax: +49 (0)2244 930-430  
E-Mail: [rental@braehler.com](mailto:rental@braehler.com)

