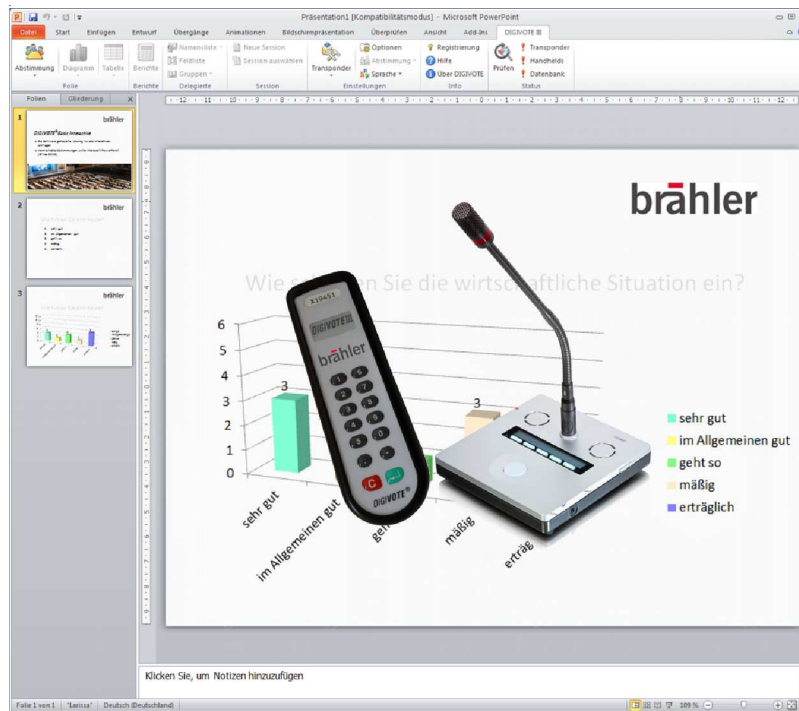


DIGIVOTE® III

Software basic interactive - PowerPoint Add-In



BRÄHLER ICS is committed to continually improving its products and so reserves the right to make technical modifications without notice.

Description

DIGIVOTE basic interactive is an Add-In for Microsoft® PowerPoint, that provides interactive audience response straight from your PowerPoint presentation with the help of voting units. By means of an easy to use DIGIVOTE Wizard you are able to create question and result slides within your PowerPoint presentation. Once the slides have been created you can use all PowerPoint formatting and animation features to enhance your presentation. When showing the slide show, the DIGIVOTE® question slide will pop-up a voting toolbar to start your voting. DIGIVOTE will collect the interactive inputs from your audience using the voting units and display the results. DIGIVOTE basic interactive can be used both with DIGIVOTE VD30 voting units as well as delegate units DIGIMIC CMic CSV. Both systems can also be used together. The transponder TR30 respectively the central unit DCen (DCen mini) processes all VD30 voting units or CMic CSV. When using VD30 more than 10,000 voting units can be operated on a single radio channel.

Features

- different modes of interaction
 - Standard vote
 - Attendance check
 - Group allocate
 - Handheld allocate
 - Parliament vote
 - Ranking
 - Shoot out
- ad hoc vote
- voting time
 - manual start/stop
 - specification of time
- quiz mode with facility of score allocation
- input of legend description
- different graphical analysis
 - diagram
 - bar graph
 - pie chart, etc.
- tabulary analysis
- different generating of reports
 - name lists
 - detailed list of voting results
 - summary lists
 - cross table
- seat management

System requirements

Hardware

Standard PC with with Office equipment
 USB port (DIGIVOTE)
 LAN port (DIGIMIC)
 DIGIVOTE® Transponder TR30
 DIGIVOTE® Voting Unit VD30
 DIGIMIC® Central Unit DCen or DCen mini
 DIGIMIC® Delegate Unit CMic CSV

Software

Windows* XP, Vista, Windows 7 (32/64 Bit)
 Microsoft* Office 2010 (Power Point + Excel [32Bit])
 Microsoft* .Net Framework 4.0 (will be installed when required)